

# Find My Wound Game

**Teacher Notes:**

Students will need a partner to complete this activity.

For repeated use of this activity in multiple classes, it may be helpful to laminate the pages and use dry-erase markers.

**Materials:**

Two file folders

Two paper clips

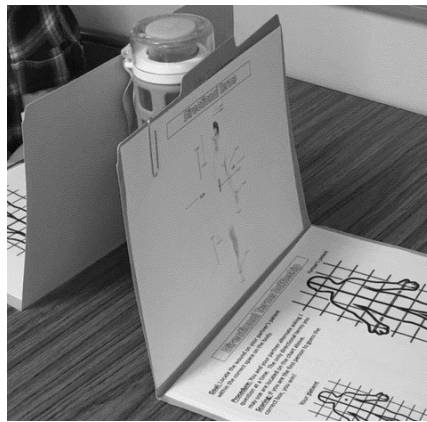
Pencil

Partner

## Directions:

1. Partners sit facing each other.
2. Each partner places a file folder open so that one half is laying flat on the desk and one half is in the air. Put the file folders together to create a wall between the partners. You may want to place something between them to help hold them up.
3. On the top part of each folder, use the paper clip to hold the “Directional Terms” page in place for reference.
4. On the bottom of the folder, place the page entitled “Find My Wound Game”.

See the set-up here:



5. Each partner makes a pencil mark on the SMALL body outline in one of the boxes. This will represent your patient’s wound.
6. **Using only the anatomical terms on the reference page**, partners will take turns asking questions to try to guess the correct box in which the wound is found.

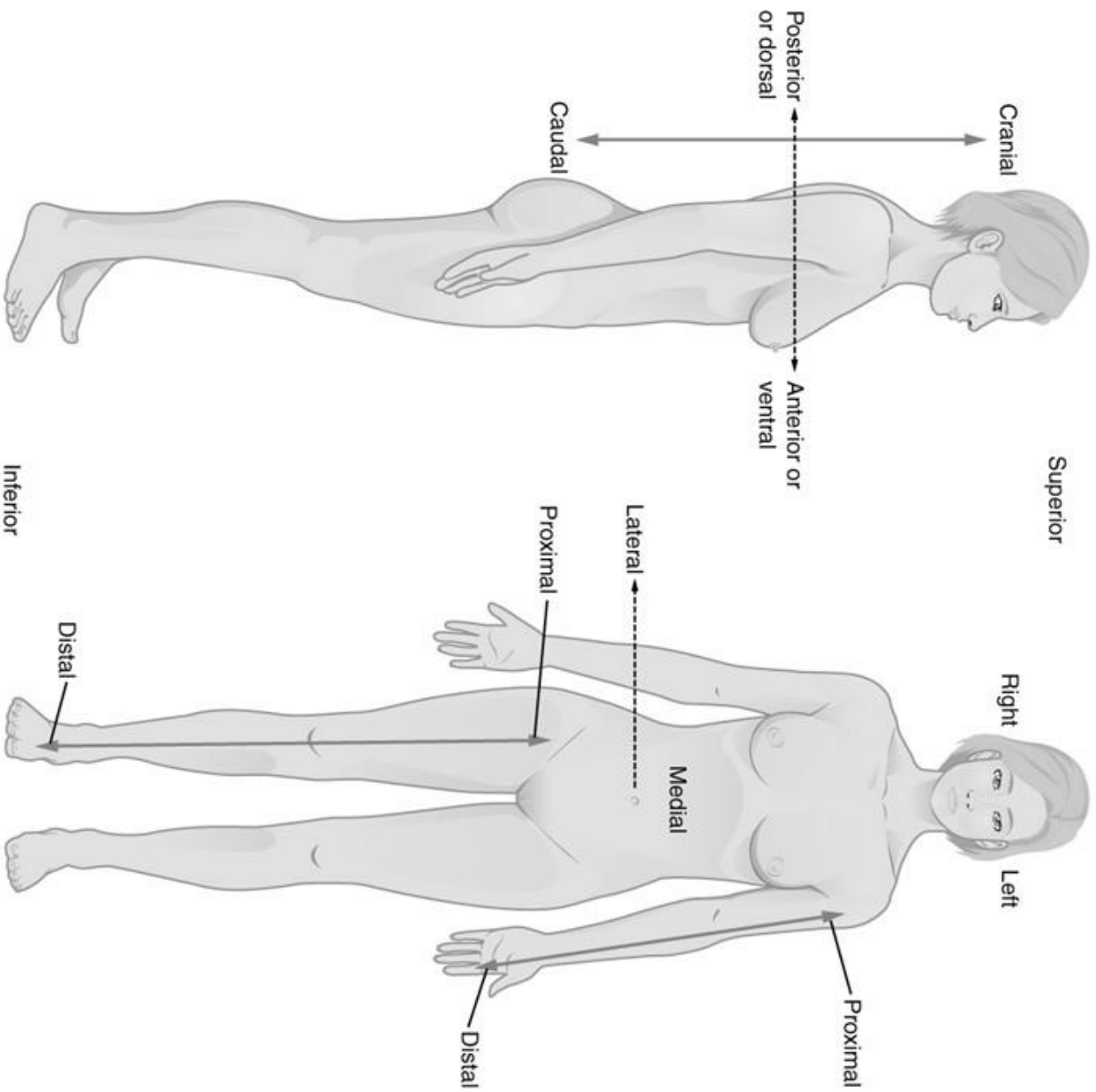
Examples:

“Is your wound to the right or left of the midline?”

“Is your wound proximal or distal to the knee?”

7. Use the larger body outline to check off boxes that do not contain your partner’s wound in order to narrow down the correct location.
8. The partner that guesses the correct location of the wound first wins that round.
9. Play continues until the students are familiar with all of the provided anatomical terms.

# Anatomical Positions:



By OpenStax College. Anatomy & Physiology, Connexions Web site. <http://cnx.org/content/col11496/1.6/>, Jun 19, 2013. - <http://cnx.org>, CC BY 3.0, <https://commons.wikimedia.org/w/index.php?curid=29624321>

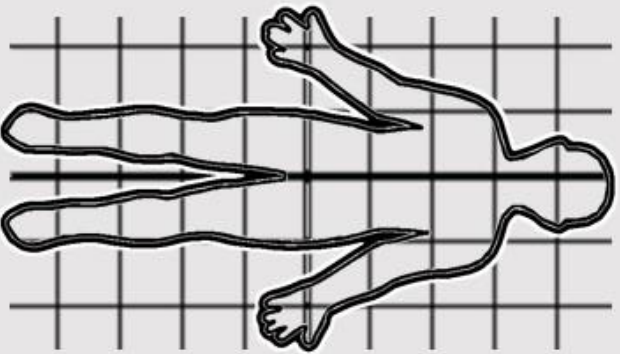
# Find My Wound Game

**Goal:** Locate the wound on your partner's patient within the correct space on the body.

**Procedure:** You and your partner alternate asking 1 question at a time. The only directional terms you may use are located on the chart above.

**Scoring:** If you are the first person to guess the correct box, you win!

Your patient



Partner's patient

